

BRAUN

CaféHouse PurAroma
CaféHouse PurAroma Plus

KF 520

KF 560

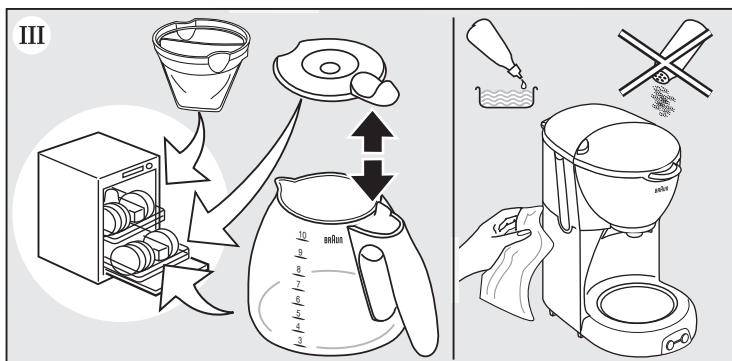
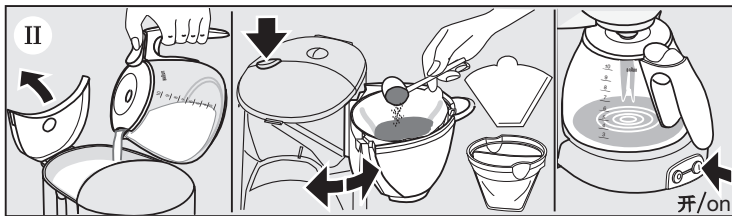
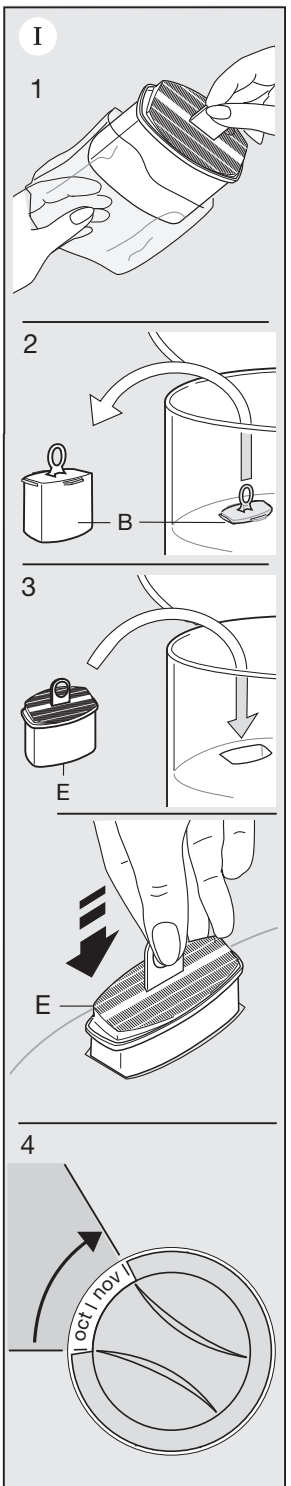
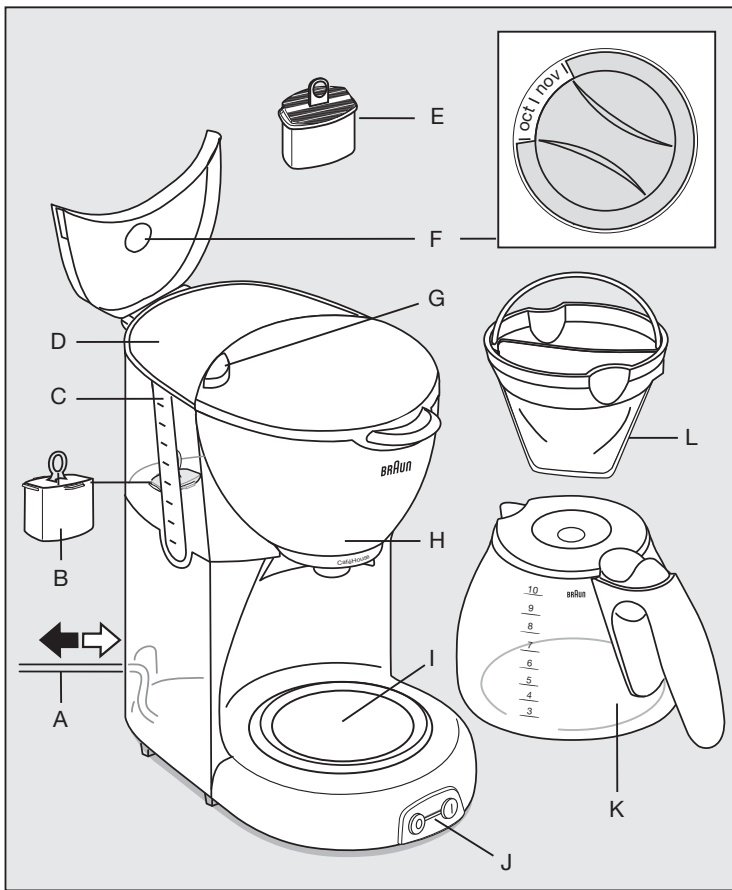


咖啡壶

Type 3104

型号 3104

www.braunhousehold.com.cn



本产品质量优良、功能齐全、设计新颖。

希望博朗咖啡壶给您带来全新的享受。

注意事项

使用产品前请仔细阅读使用说明书, 并请妥善保管。

- 若无人监督并确保安全, 儿童、行动不便或智力障碍者不宜使用本产品。通常建议您将本产品放置在儿童无法接近的地方。
- 在接通电源前, 请检查您使用的电压是否与该产品底部标注的电压一致。
- 避免碰到加热表面, 尤其是加热台。请勿将电线与咖啡壶接触。
- 请勿将咖啡壶放置在其他加热表面上(如炉盘, 发热盘等)。
- 请勿将咖啡壶放入微波炉中加热。
- 再次煮咖啡前, 请先将咖啡壶冷却五分钟(关闭开关), 否则向水箱注入冷水时会产生高温水蒸汽。
- 博朗电器符合所有适用的安全标准。任何电器产品的修理(包括更换电线)均须由授权的博朗服务中心完成。错误或不当的修理可能导致意外事故, 对用户造成伤害。
- 本产品的容量可满足一般家庭需求。
- 煮咖啡时请使用冷水。
- 如果电源软线损坏, 为了避免危险, 必须由制造商, 其维修部或类似部门的专业人员更换。

最多可冲泡

10 杯 (每杯125 毫升)

部件描述

- A 电线/电线储藏格
- B 补偿器
- C 水位指示灯
- D 水箱
- E 水过滤器滤芯(KF520型号中不含此部件;可单独购买)
- F 滤水器更换显示器(Jan-1月, Feb-2月, Mar-3月, Apr-4月, May-5月, Jun-6月, Jul-7月, Aug-8月, Sep-9月, Oct-10月, Nov-11月, Dec-12月)
- G 滤网释放钮
- H 防滴漏滤网
- 咖啡壶加热台
- J 电源开关
- K 咖啡壶
- L 永久滤网

一、使用前的准备

安装水过滤器滤芯

(KF520型号中不包括此部件; 可单独购买)

1. 拆除水过滤器滤芯(E)。
2. 从水箱中取出补偿器(B)。
3. 插入水过滤器滤芯。(请妥善保管补偿器, 因为取下水过滤器滤芯后需将其装回水箱中。)
4. 滤水器需每两月更换一次。为提醒您及时更换滤水器, 您可在滤水器更换显示盘(F)上进行设定, 左边显示当前月份(起始月份), 右边显示更换滤水器的月份(结束月份)。

注意事项:

首次使用咖啡壶前, 长时间闲置或安装新的水过滤器滤芯后, 应加入清洁的冷水, 直至水箱最高水位线, 不加咖啡粉先运行一次。

二、煮咖啡

在水箱中注入清洁的冷水, 按下滤网按钮(G)将滤网打开, 插入一张四号滤纸或放入永久滤网(L), 加入咖啡粉, 将咖啡壶放在加热台上(I)按下咖啡壶开关(J)在装入咖啡粉或清除咖啡渣时, 可将滤网从固定钩上轻松取下更为便利。在咖啡煮好之前防滴漏设计有助于避免咖啡倒入杯中时的咖啡滴漏。倒完咖啡后, 应尽快将咖啡壶放回加热板上, 以免咖啡从滤网中溢出。

每杯咖啡所需时间: 约一分钟。由于咖啡粉吸水, 煮成的咖啡一般少于加水量。

三、水过滤器

水过滤器能过滤水中的氯, 使咖啡香味更浓郁, 定期更换过滤芯(每两月一次), 不仅能使咖啡味道更好, 也能延长咖啡壶的寿命。博朗水过滤器在各大零售店及博朗服务中心均有销售。

四、清洗

清洗本产品前请先切断电源。

请勿将本产品放在流水下清洗或将其浸入水中, 只能使用湿布清洗。

咖啡壶、防滴漏滤网(H)和永久滤网(L)均可用洗碗机清洗。

五、除垢

如果水质过硬或咖啡壶不带滤水器, 则须定期除垢。

如果您使用水过滤器滤芯并能定期进行更换, 通常不需要除垢。但是, 若煮咖啡的时间超过正常时间, 则需进行除垢。

重要事项: 在除垢过程中, 请取出滤水器, 以补偿器替代。

- 可使用市面上销售的除垢剂或食用白醋除垢, 不会损伤咖啡壶。

- 如果您使用除垢剂，请按厂商提供的说明书操作。
- 按照实际需要多次重复这一过程，直到咖啡机能正常工作。
- 除垢完毕后，加入冷水至水箱最高水位线，清洗整个咖啡壶。至少清洗两次。

- 在保修期内提供的服务并不影响保修期按时结束，保修期中更换的零件或整机的保修服务与本产品的保修期同时终止。
- 除非确有法律规定，本公司不对其他任何要求负责。同供货商的销售合同中规定的各项权利不受此保修的影响。

适当操作保证更好效果

这款咖啡壶的设计是为了最大程度地保持咖啡的香味。因此，博朗建议：

- 只使用新鲜的咖啡粉。
- 将咖啡粉保存在密封的容器中，放置在阴凉、干燥、黑暗的地方（如冰箱）。
- 只使用博朗的滤水器，经常使用时每两个月更换一次。
- 按照第四部分和第五部分内容，定期对咖啡壶进行清洗和除垢。

如有变化，恕不另行通知。

在本产品使用寿命结束后，请勿将其与生活垃圾一起处理。

您可以将其交给博朗服务中心或您所在国家的回收点。



保修

我们为产品提供为期两年的保修，保修期从购买日开始计算。

在保修期内对于产品因生产过程引起的各种瑕疵，我们会视情况更换零件或整个产品。

申请保修必须将本产品 and 能够证明购买日期的证据(购货发票)一起交给授权的Braun维修站，本产品附有一张授权的维修站名单。

请确认已将购货发票放置在安全的地方。

上述保修不包括以下内容：

- 由于使用不当而造成的产品损坏(如：使用错误的电流、电压，将产品插入不合适的插座，或者人为损坏等)。
- 正常使用引起的产品老化、磨损，但对产品的使用功能及价值影响不大。
- 按行业惯例定义的易损、易耗件。
- 如果产品经过未经授权的人员的修理，或产品使用了非本公司(Braun)的零件，保修期即终止。
- 非家庭使用(如工业、商业用)引起的损坏。

如果需要保修或维修，请与当地的维修站，或就近的维修站联系。

客服热线：400-827-1668



English

Our products are engineered to meet the highest standards of quality, functionality and design. We hope you thoroughly enjoy your new Braun appliance.

Caution

Please read the use instructions carefully and completely before using the appliance.

- This appliance is not intended for use by children or persons with reduced physical or mental capabilities, unless they are given supervision by a person responsible for their safety. In general, we recommend that you keep the appliance out of reach of children. Children should be supervised to ensure that they do not play with the appliance.
- Before plugging into a socket, check that your voltage corresponds with the voltage printed on the bottom of the appliance.
- Avoid touching hot surfaces, especially the hotplate. Never let the cord come in contact with the hotplate.
- Do not put the glass carafe on other heated surfaces (such as stove plates, hot trays, etc.).
- Do not microwave glass carafe.
- Before you start preparing a new pot of coffee, always allow the coffeemaker to cool down for approx. 5 minutes (switch off the appliance), otherwise steam can develop when filling the water tank with cold water.
- Braun electric appliances meet applicable safety standards. Repairs on electric appliances (including cord replacement) must only be carried out by authorized service centres. Faulty, unqualified repair work may cause accidents or injury to the user.
- This appliance was constructed to process normal household quantities.
- Always use cold water to make coffee.

Maximum cups

10 cups (125 ml each)

Description

- Ⓐ Cord/cord storage
- Ⓑ Space compensator
- Ⓒ Water level indicator
- Ⓓ Water tank
- Ⓔ Water filter cartridge (not included in model KF 520; may be purchased separately)
- Ⓕ Water filter exchange dial
- Ⓖ Swing-filter push button
- Ⓗ Filter basket with drip stop
- Ⓘ Hotplate
- Ⓝ On/off switch
- Ⓚ Carafe with aroma seal lid
- Ⓛ Permanent filter

I Setting into operation

Installing the water filter cartridge
(not included in model KF 520; may be purchased separately)

1. Unpack the water filter cartridge (Ⓔ).

2. Remove the space compensator (Ⓑ) from the water tank.
3. Insert the water filter cartridge. (Be certain to keep the space compensator as it must be installed in the water tank whenever the water filter cartridge is removed.)
4. The water filter should be exchanged every two months. To remind you, set the water filter exchange dial (Ⓕ) so that the current month is shown in the left space (start month). The month you should replace the water filter will then be shown in the right space (end month).

N.B.

Before using the coffeemaker for the first time, after a long period of not using it, or after installing a new water filter cartridge, run the coffeemaker through one brewing cycle using the maximum amount of cold, fresh water without any ground coffee.

II Making coffee

Fill tank with cold, fresh water, press filter push button (Ⓒ) to open filter basket, insert a No. 4 paper filter or the permanent filter (Ⓛ), put in ground coffee, place the carafe on the hotplate (Ⓘ) and switch on the coffeemaker (Ⓝ). For more convenience when filling with or disposing of ground coffee, the filter basket can be easily taken off its hinge. A drip-stop prevents dripping when the carafe is removed to pour a cup before brewing is finished. Carafe should be immediately returned to hotplate to prevent the filter basket from overflowing.

Brewing time per cup: approx. 1 minute. Amount of brewed coffee in the carafe will be below initial filling level as water is retained by ground coffee.

III Water filter

The water filter improves coffee flavor by removing chlorine, bad tastes and odors as well as scale. If the cartridge is replaced regularly (every two months), it provides not only better tasting coffee, but also can extend the life of your coffeemaker by preventing calcification. Braun water filters are available at your retailer or Braun service centre.

IV Cleaning

Always unplug the appliance before cleaning. Never clean the appliance under running water, nor immerse it in water; only clean it with a damp cloth.

The glass carafe, filter basket and the permanent filter are dishwasher safe.

V Decalcifying (without illustrations)

If you have hard water and you use your coffeemaker without a water filter, it has to be decalcified regularly. When using the water filter cartridge and exchanging it regularly, you normally will not need to decalcify. However, if your coffeemaker takes much longer than usual to brew, it should be decalcified.

Important: Replace water filter with the space compensator during any decalcification procedure.

- You can use a commercially available decalcifying agent, which does not affect aluminum.

- Follow the instructions of the manufacturer of the decalcifying agent.
- Repeat the procedure as many times as necessary in order to reduce the brewing time per cup to a normal level.
- Allow the maximum amount of fresh cold water to run through at least twice to clean the coffeemaker.

Best practices for best results

This coffeemaker is designed to deliver maximum coffee aroma. Therefore, Braun recommends:

- Use only fresh ground coffee.
- Store ground coffee in a cool, dry and dark place (e.g., refrigerator) in an airtight container.
- Use only Braun water filters and exchange every two months with regular use.
- Clean and decalcify coffeemaker regularly as described in parts IV and V.

Subject to change without notice

Please do not dispose of the product in the household waste at the end of its useful life. Disposal can take place at a Braun Service Centre or at appropriate collection points provided in your country.



De'Longhi Braun Household GmbH
Carl-Ulrich-Straße 4
63263 Neu-Isenburg/Germany

5713210124/11.15
China/GB